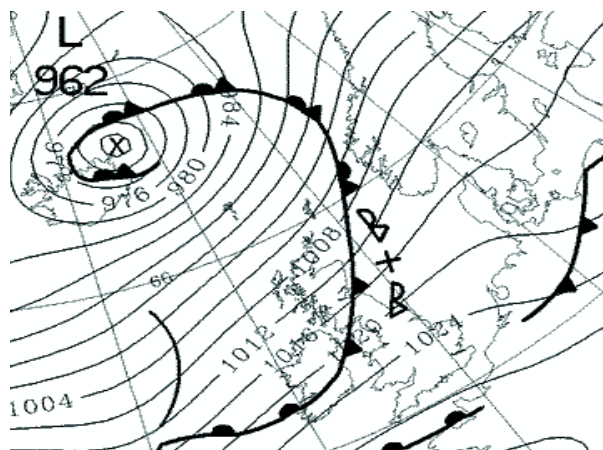


SUMMARY OF HEAVY SNOWFALLS IN THE UNITED KINGDOM 2005

The year 2005, saw 22 heavy snowfall days, which is well above an average year of heavy snowfalls across the United Kingdom.

Saturday 1 January 2005 – Sunday 2 January 2005

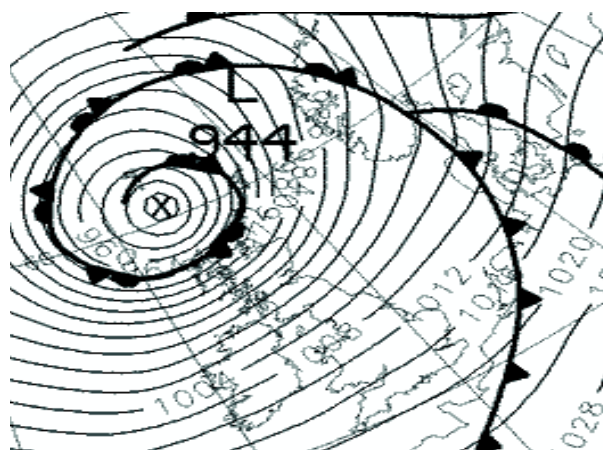
Snow affected N Scotland on the 1st, while snow affected many areas of Scotland and N England, particularly the Highlands on the 2nd. The snow caused some travel disruption with some roads being forced to close across the Highlands, while the M6 in Cumbria was also closed for a time on the 2nd.



Synoptic Chart 0000 UTC on Saturday 1 January 2005 (Meteorological Office)

Wednesday 12 January 2005

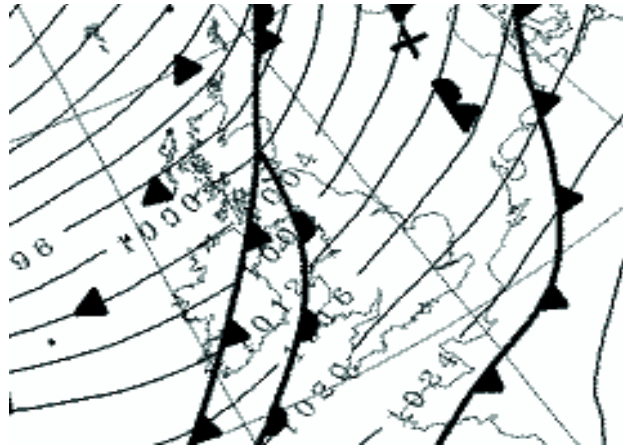
Snow and blizzard conditions caused by winds up to 100mph affected the higher ground of the Highlands. Snow also affected parts of S Scotland, NE England and the Midlands.



Synoptic Chart 0000 UTC on Wednesday 12 January 2005 (Meteorological Office)

Monday 17 January 2005 – Tuesday 18 January 2005

Snow affected much of Scotland late on the 17th, forcing some major roads to close. In Ayrshire, a 56-year-old motorist, Alan Kennedy, of Hollow Park, Ayr, was killed when his car collided with another vehicle on the A77 near Ayr. Snow continued into the 18th, to affect Scotland, N Ireland and N England at first. The heaviest snow affected Central and Eastern districts of Scotland with significant drifting in places due to up to 25cm of snow falling in places. Aberfeldy, Perthshire reported a snow depth of 15cm. The snow forced the closure of several roads across Scotland, including sections of the A93, A81, A85, A822 and the A924. In N Ireland, up to 15cm also fell forcing a significant number of schools to close. In Western Scotland, the snow forced all the schools to close.



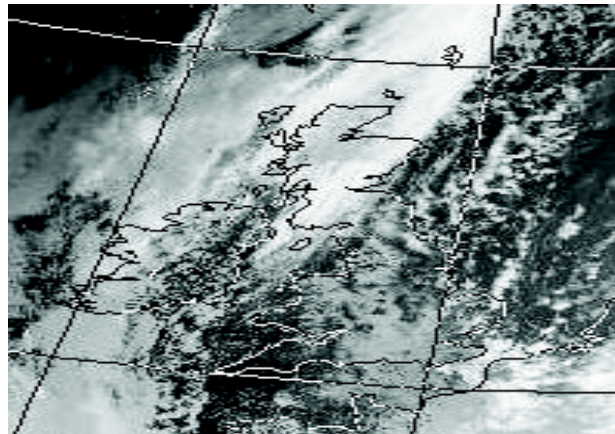
Synoptic Chart 0000 UTC on Monday 17 January 2005 (Meteorological Office)

Sunday 23 January 2005

Heavy snow showers affected E Scotland, N Scotland, E England and CS England, while minor snowfalls affected the Midlands and over some high ground in SW England. The snow caused problems on the M90 in Fife, while 29cm of lying snow was reported from Boltshope Park, County Durham.

Sunday 20 February 2005 - Monday 21 February 2005

Snow showers affected the Midlands, N England, SE England and N Scotland. It was reported that Normandy, Cleveland had snow lying to a depth of 14cm by late morning. Snow showers claimed the life of a 20 year-old man in Cramlington, Northumberland, due to a sledging accident that occurred during Sunday evening. In Scotland, particularly over high ground, blizzards forced the closure of more than 30 schools in Aberdeenshire on Monday. Up to 13cm of snow was reported to have fallen across the higher ground of E Scotland, while at Nairn, Nairnshire, 10cm of snow occurred.



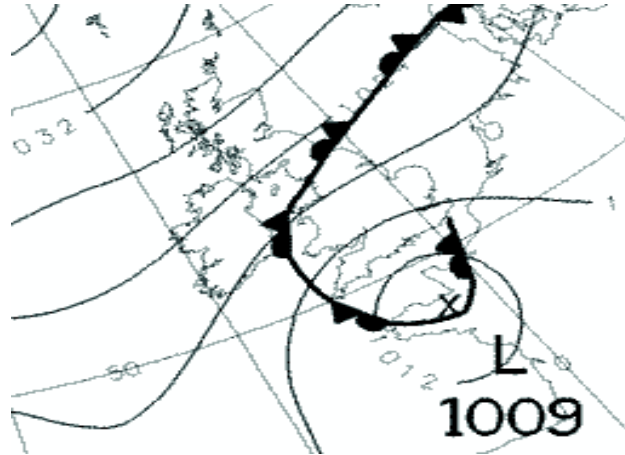
Satellite photograph of the British Isles made by NOAA 16 Polar Orbiting Satellite at 14:41 UTC on the 20 February 2005 (Photograph courtesy of NERC Satellite Receiving Station, Dundee University, Scotland (www.sat.dundee.ac.uk))

Thursday 24 February - Friday 25 February 2005

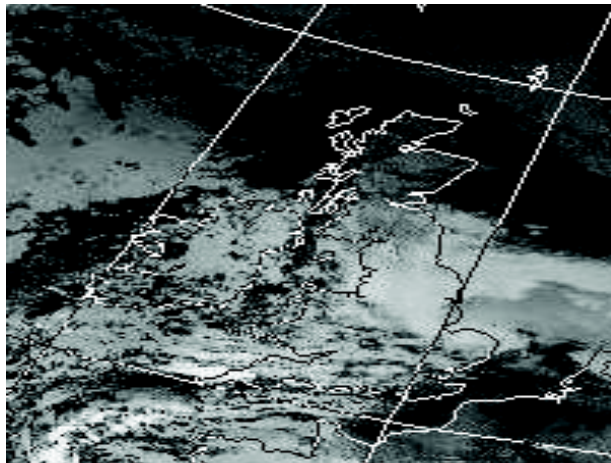
On the 24th, heavy snow fell across N England, the East Midlands, Wales and S Scotland. Parts of the Pennines received a snowfall up to 15cm, while drifts up to 1.5m high were recorded. The snow forced more than 600 schools to close across many parts of the UK. A patrol officer from then RAC spent Thursday morning trapped in the snow at Rosedale Abbey, on the North Yorkshire Moors, before being found by a RAF mountain rescue team at about 06:00 GMT that morning. On the A479 at Pengeford, between Tretower and Talgarth, Powys a van left the road due to snow lying on the ground. Lying snow also caused an accident to occur on the A483 at Dolfor, between Newtown and Llandrindod

Wells, Powys. Snow depths on the 24th included 37cm at Boltshope Park, County Durham and 22cm at Carterhouse, Roxburghshire.

On the 25th, heavy snow affected many central and eastern districts of England. The snow caused 54 flights to be cancelled at Heathrow Airport, while hundreds of schools were forced to close across Kent as up to 27cm of snow fell across the county. At Boltshope Park, County Durham, 50cm of snow was lying on the ground on the morning of the 25th.



Synoptic Chart 0000 UTC on Friday 25 February 2005 (Meteorological Office)



Satellite photograph of the British Isles made by NOAA 16 Polar Orbiting Satellite at 13:43 UTC on the 25 February 2005 (Photograph courtesy of NERC Satellite Receiving Station, Dundee University, Scotland (www.sat.dundee.ac.uk))

Sunday 27 February 2005 - Friday 4 March 2005

During the morning of the 27th, snow showers fell over NE Wales and N England for a while. Grosmont on the North Yorkshire Moors, snow was reported to be 10cm in depth that morning. During the afternoon of the 27th, heavy snow occurred in E England. It was reported that 50cm snowdrifts occurred in parts of Kent and East Sussex. The snow caused a series of accidents to occur on the roads of Kent. The A21 at Lamberhurst, Kent was blocked after a lorry jack-knifed on the snow, while the A249 at Detling Hill, Kent was also affected by a snow related accident.

Heavy snow affected SE England and the Channel Isles on the 28th, closing schools and affecting postal deliveries on Guernsey and Jersey. Guernsey and Jersey Airports were closed for a time, so the snow on the runways could be cleared. In Herne Bay, Kent, 15cm of snow fell during the early morning.

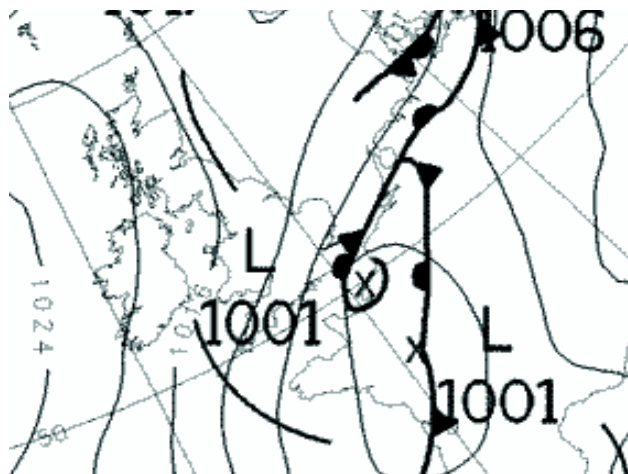
On the 1st, up to 30 vehicles were involved in an accident on the M8 between Glasgow and Edinburgh, as heavy snow affected many parts of Scotland. The 30 vehicles accident occurred near the eastbound

junction at Livingston at 06:45 GMT; however, no one was seriously injured. It was reported that snow fell up to 13cm in parts of Aberdeenshire, Angus, Dundee, Fife, Edinburgh and the Borders. Jack-knifed lorries in Fife led to stretches of the A914 near to Freuchie and the A92 at Cupar to close due to snow covered roads. The snow also caused more than 140 schools in Fife and 30 schools in Aberdeenshire to close or partially close, along with 20 schools and nurseries in Angus.

During the 2nd, heavy snow affected Kent, Surrey and East Sussex causing the closure of 400+ schools. The snow across Kent caused the M20 and the M2 to close and the Army was called in to help the NHS to move staff and patients. The snowfall also resulted in 200 homes to lose their electricity supply. This snowfall was reported as the heaviest snowfall to occur across Kent in the month of March in 10 years; with Wigmore, receiving a snow depth of 15cm, while Rochester received 19cm. Heavy snow also affected NE Scotland forcing 80 schools to close. Three people were injured in a road accident due to the wintry conditions at Udny, Grampian. Heavy snow also occurred across N England with 15cm of snow being reported at Carlton-in-Cleveland, North Yorkshire. The snow also forced many schools to close across North and West Yorkshire. A police car and four articulated lorries were trapped in the snow across the North Yorkshire Moors. Leeds Bradford Airport, West Yorkshire reported lengthy flight delays caused by the snow. Train and bus services were also disrupted due to the snow across West Yorkshire. The snow also resulted in power cuts across West Yorkshire.

Forty children from St Mary's RC School in Longbenton, Tyne and Wear were suspended for two days on the 3rd after taking part in a snowball battle with passing motorists. The snow also resulted in the A171 in North Yorkshire between Whitby and Scarborough to close. At Copley, County Durham, it was reported that 24cm of snow was lying that morning, with 18cm at Stanhope, County Durham. Heavy snow also affected East Sussex. The snow caused a bus to crash on the A259 at East Den, near Eastbourne, East Sussex during the late afternoon of the 3rd. Six people were taken to hospital. The heavy snow also forced 30 schools to close across East Sussex.

During the 4th, heavy snow affected parts of Kent, the S Midlands, London and East Anglia. Hundreds of schools were forced to close across the region. Luton and Stansted Airports were temporarily closed for a period of time, so to clear the runways of snow. Train and bus services were also disrupted across Kent, particularly in Rochester and Sittingbourne.



Synoptic Chart 0000 UTC on Thursday 3 March 2005 (Meteorological Office)

Sunday 13 March 2005 - Monday 14 March 2005

Heavy snow with blizzard conditions across higher ground affected N Scotland during the evening of the 13th and the morning of the 14th. The snow disrupted rail links into Wick, Caithness.

Thursday 7 April 2005

Heavy snow affected the Highlands in Scotland, blocking many high level roads across the area.

Thursday 24 November 2005 – Friday 25 November 2005

Heavy wintry showers affected Northern Scotland and Northern Ireland during the morning and afternoon of the 24th which then spread southwards during the evening and the morning of the 25th to affect parts of North Yorkshire, Wales, East Anglia and SW England. On the afternoon of the 24th, 4

men were rescued from the Cairngorms after being stranded due to blizzard conditions. The four men all in their 30's from the Dundee area got lost as they descended from the summit of Ben Macdui, Aberdeenshire. The four men raised the alarm by mobile phone on Thursday morning after spending the night in survival bags. Elsewhere, a man was killed in Rosewell, Midlothian in a road crash due to the wintry weather. Up to 35cm of snow fell in parts of Scotland, Wales and Northern Ireland. In Highland and Aberdeenshire, approximately 4,000 homes were left without power, while 100 schools were forced to close across Scotland as a whole due to the snow. The snow also closed many roads on Thursday around the Braemar and Crathie area and the A939 between Cockridge and Tomintoul, Grampian. Motorists were also stuck for several hours on the M8 in Lanarkshire.

During Friday, parts of the higher ground of Cornwall and Devon saw a snowfall up to 30cm, with 2m drifts. This included Dartmoor where a shuttle service using 4x4 vehicles were set up to courier staff to work at Dartmoor Prison. The snowfall also trapped approximately 1000 people on the A30 near Kennards House across Bodmin Moor, Cornwall after several snow related accidents blocked the road. The snow caused a six-mile tailback and people were advised by the police to remain in their vehicles. A Royal Marine and two RAF and Navy helicopters and a convoy of four-wheel drive vehicles organised by Devon and Cornwall police, took stranded drivers to leisure centres and emergency shelters for the night, including the Dragon Leisure Centre and the Jamaica Inn Pub, both close to Bodmin. Also across Cornwall, Head teachers closed 68 of Cornwall's 273 primary and secondary schools because of the snow. The snow also closed Newquay Airport for a time. In west Dorset, police were called to a coach full of 29 children after becoming stranded in thick snow at Lyme Regis. In Wales, 460 schools were forced to close, while on the M4 in South Wales a 50mph speed limit was imposed because of heavy snow. In the Rhondda Valley, Mid Glamorgan, lorry drivers were advised to avoid particular roads across the area due to thick snow. The snow also caused flight delays at Cardiff International Airport. Tragically, the extreme weather claimed the life of an elderly man who was found dead in his car at Tog Hill, near Bath, Somerset. The man died due to a heart attack brought on by hypothermia. The snow also killed a motorcyclist in a crash at 0530 GMT on the A394 between Sithney and Breage, near Porthleven, Cornwall.



Armagh, County Armagh on the evening of Thursday 24 November 2005
(Photograph courtesy of Miruna Popescu)



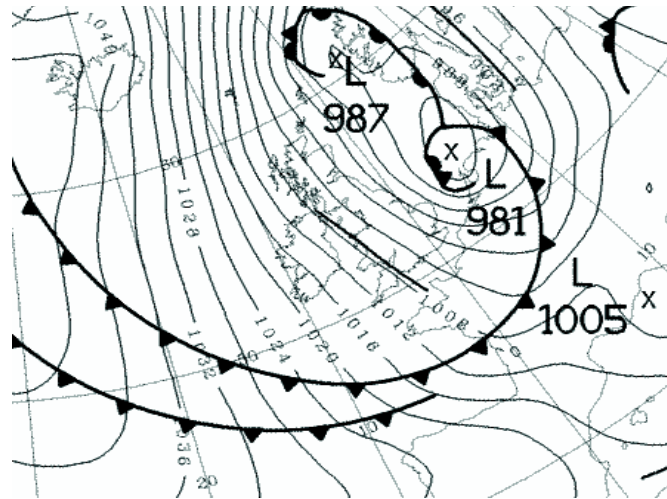
Aberdeen, Grampian at 0100 GMT on Friday 25 November 2005
(Photograph courtesy of Gregory McAbery)



Swansea, West Glamorgan on the morning of Friday 25 November 2005
(Photograph courtesy of Michael Price)



Cannington Viaduct, near Uplyme, East Devon on the morning of Friday 25 November 2005
(Photograph courtesy of Joss Kent)



Synoptic Chart 0000 UTC on Friday 25 November 2005 (Meteorological Office)



Satellite photograph of the British Isles made by NOAA 17 Polar Orbiting Satellite at 11:07 UTC on the 25 November 2005 (Photograph courtesy of NERC Satellite Receiving Station, Dundee University, Scotland (www.sat.dundee.ac.uk))

Monday 28 November 2005

Heavy snow showers fell across Grampian and the Highlands throughout the day. Heavy snow showers also affected N England, particularly around the Manchester, Pennine area and the North Yorkshire Moors, before pushing southwards to affect the Midlands and Lincolnshire during the afternoon and evening. Up to 13cm of snow fell across the higher parts of Grampian and Gloucestershire particularly around Cirencester, Stroud and the South Cotswolds between 1700-2000 GMT. Approximately 400 cars were abandoned on the A417 between Gloucester and Cirencester due to snowy conditions. The snow also closed the A57 Snake Pass across the Pennines for a time. Snow also forced the abandonment of horseracing at Wolverhampton, West Midlands.

Tuesday 27 December 2005 – Wednesday 28 December 2005

On the 27th, heavy snow affected parts of East Anglia and SE England. Up to 30cm of snow fell across the higher parts of Kent, with 18cm falling at Folkestone. The snow caused the closure of the Channel Tunnel terminal in Kent, which in turn delayed early evening traffic for two hours. Also in Kent, the snow closed the A20 and the A2 roads around Dover, while at Milford, Surrey, the A3 was also forced to close for a time. On the M20 motorway in Kent, the snow triggered a 50mph speed limit between Maidstone and Folkestone. The snow caused an abandonment of several train services including Hastings, East Sussex to Tonbridge, Kent. Several Kent villages including Elham, Newington, Sellinge and Brabourne became isolated due to the snow with the exception to 4x4 vehicles.

On the 28th, heavy snow affected Norfolk, Lincolnshire, the East Midlands, West Yorkshire and NE England. Lincoln, Lincolnshire received a snowfall of 10cm, parts of Northumberland sustained 15cm, while North Yorkshire accumulated 20cm across the higher ground. The snowy weather caused the postponement of the Premier League football match between Newcastle United and Charlton Athletic at St. James Park in Newcastle-upon-Tyne, Tyne and Wear. Horse racing at Catterick, North Yorkshire was also affected by the snow. The snow caused huge tailbacks on the A1 between Alnwick and Berwick, Northumberland as the single carriageway road was blocked when a tanker broke down near Adderstone. The A171 Whitby to Guisborough road in North Yorkshire and the A19 near Durham, County Durham was also closed with snow for a short period of time.

Friday 30 December 2005

Heavy snow affected NE England, East Anglia and E Scotland, with up to 20cm falling across the higher ground of North Yorkshire. The snow caused hundreds of drivers to be stranded on the A1079 during the late morning at Arras Hill, East Yorkshire. Humberside Fire Service helped to clear the snow off the road with 4x4 vehicles and supplied hot drinks to stranded travellers. Snow had blown onto the road from nearby fields creating snowdrifts up to 1m high burying cars. Also, 20 vehicles were inhibited on the snow-blocked A157 at Welton le Wold near Louth in the Lincolnshire Wolds. One man fatally died on the A614 near Londesborough, East Yorkshire when his van collided with a lorry due to the snowy conditions. A second man died and two people were hurt in a multi-vehicle crash on the A80 at Auchenkilns in North Lanarkshire because of the snow.

In East Yorkshire, a 46-year-old man from Drifffield died after crashing into a lorry on the A164, while apparently attempting to avoid a snowdrift. In East Lothian, a woman was killed and four passengers were seriously injured during a four-vehicle road traffic accident on the A1 near Torness. The snow also closed the B9176 from Alness to Easter Fearn and the B974 from Banchory to Fettercairn, in Scotland. The snowy weather also affected flights out of Newcastle International Airport, with two services cancelled and six domestic and international flights being delayed. At Stansted Airport, Essex, the runway was temporarily shut due to the snow diverting two incoming Ryanair flights to Bournemouth, Dorset, while Luton Airport was also badly affected by snow in Bedfordshire.